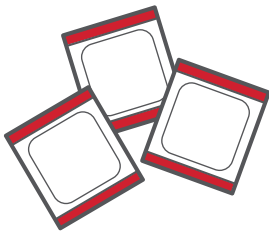


# Tips for Improved Adhesion

The following tips may help patients who may experience adhesion challenges. To help prepare the skin and facilitate optimized adhesion for extended monitoring, consider using a liquid adhesive from the following product options:\*

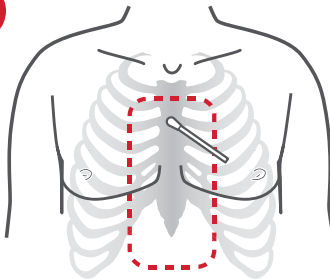
- **Skin-Tac™**  
Wipes or Liquid
- **Mastisol®**  
Liquid Adhesive
- **Aplicare®**  
Compound Benzoin Tincture Swabsticks

1



Prepare and clean the skin with the 3 electrode prep pads provided in the CAM Mailer Box and allow skin to dry for at least 2 minutes per CAM Instructions for Use.

2



Following the manufacturer's instructions, apply a thin layer of liquid adhesive on sternal area where CAM patch will be placed.

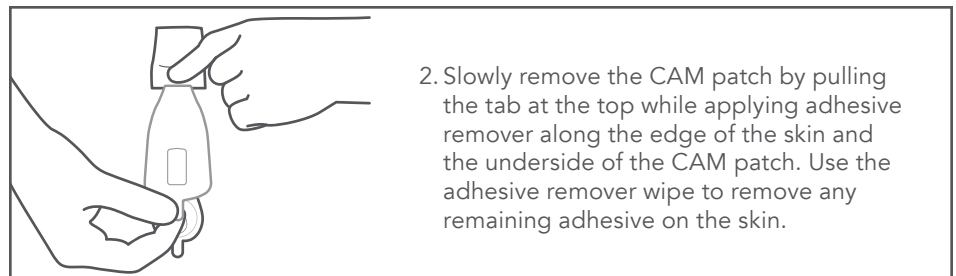
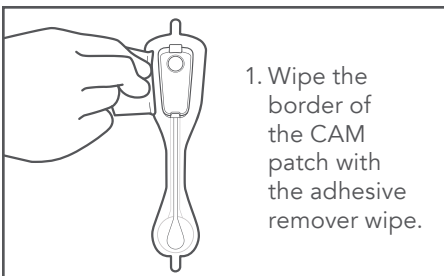
**Caution: Do not use any other prep pads or substances on the skin after applying the liquid adhesive**

3



Allow adhesive to dry at least 30 seconds\* before applying the CAM patch per CAM Instructions for Use.

The provided Adhesive Remover Wipe Pad may be used to aid in removal of the CAM patch.



\* Always reference manufacturer IFU or user guide for Warnings, Cautions and appropriate application instructions. Apply per your institutional protocol. Refer to the Clinician Instructions for Use or the Quick Reference Instructions for complete instructions for CAM patch application. If considering use of a liquid adhesive, refer to the cautions and warnings in that product's Instructions for Use, particularly the allergy warnings prior to application. Skin-Tac™ is a trademark of Torbot. Mastisol® is a registered trademark of Ferndale Laboratories. Aplicare® is a registered trademark of Medline.